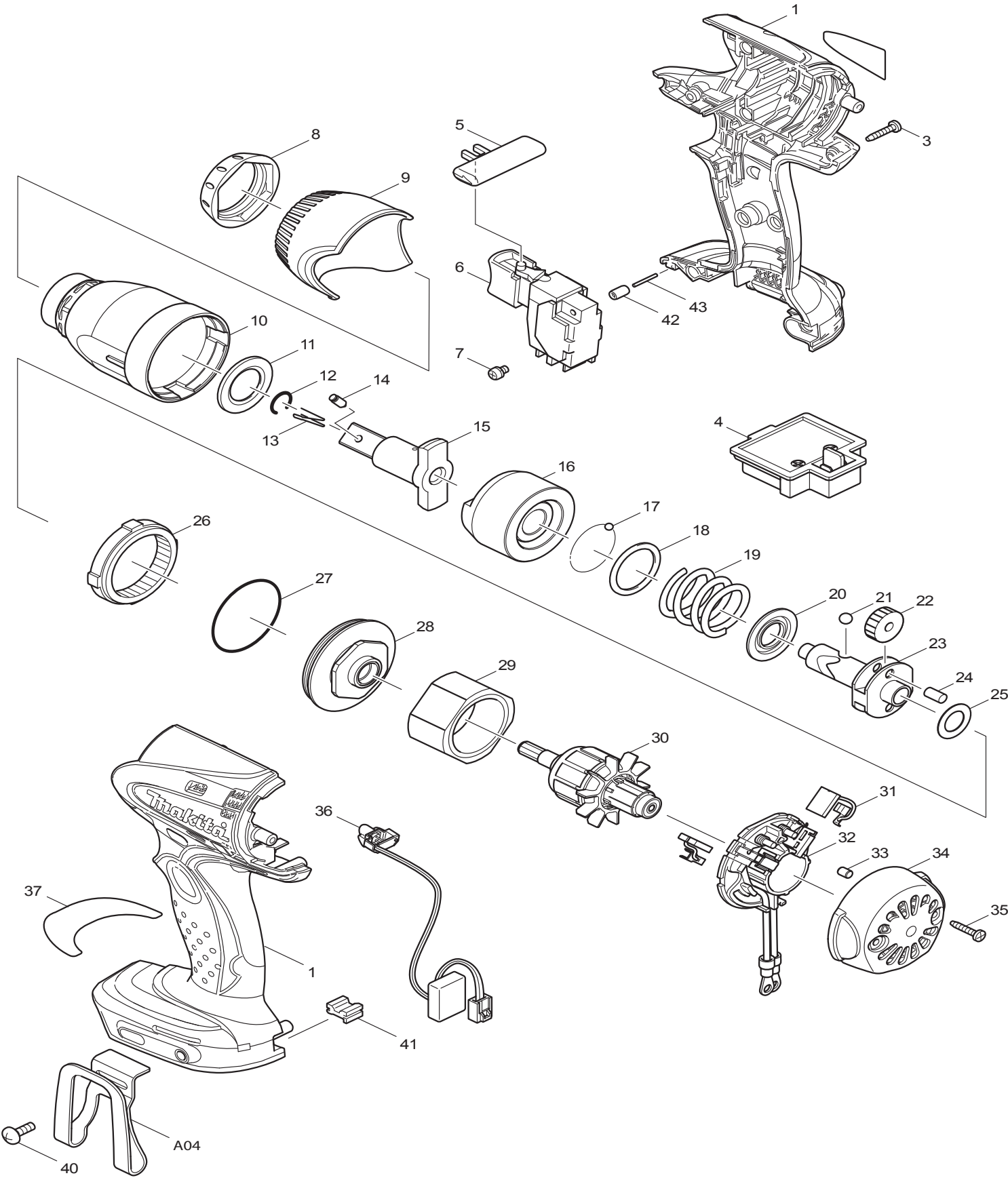




08-2010
BTW250/ BTW250Z
14.4V 1/2" IMPACT WRENCH KIT



| Item No. | Type | Sub | Parts No. | Description | Qty | Unit |
|--------------------|------|------|---|---|-----|------|
| 1 | 1 | | 188192-6 | * HOUSING SET | 1 | SET |
| | | INC. | 263005-3 | * RUBBER PIN 6 | 2 | PC. |
| | 2 | | 188242-7 | * HOUSING SET | 1 | SET |
| | | INC. | 263005-3 | * RUBBER PIN 6 | 2 | PC. |
| | 3 | | 187466-2 | * HOUSING SET | 1 | SET |
| | | INC. | 263005-3 | * RUBBER PIN 6 | 2 | PC. |
| 3 | | | 266130-9 | TAPPING SCREW BIND PT 3X16 | 8 | PC. |
| 4 | 1 | | 643811-6 | * TERMINAL | 1 | PC. |
| | 2 | | 643866-1 | * TERMINAL | 1 | PC. |
| 5 | | | 419041-9 | F/R CHANGE LEVER | 1 | PC. |
| 6 | 1 | | 650564-0 | * SWITCH TG553FSB-1 | 1 | PC. |
| | 2 | | 650652-3 | * SWITCH TG553FSB-1B | 1 | PC. |
| 7 | | | 652045-0 | +PAN HEAD SCREW M3.5X5 | 2 | PC. |
| 8 | 4 | | 424375-7 | * BUMPER | 1 | PC. |
| 9 | 4 | | 452439-7 | * HAMMER CASE COVER | 1 | PC. |
| 10 | 3 | | 140171-2 | * HAMMER CASE COMPLETE (TYPE 3-4) | 1 | PC. |
| 11 | | | 261116-8 | NYLON WASHER 18 | 1 | PC. |
| 13 | | | 322045-1 | CLIP | 1 | PC. |
| 14 | | | 323675-1 | PIN 4 | 1 | PC. |
| 15 | | | 324704-3 | ANVIL | 1 | PC. |
| 16 | | | 324703-5 | HAMMER | 1 | PC. |
| 17 | | | 216001-0 | STEEL BALL 3.5 | 24 | PC. |
| 18 | | | 267175-0 | FLAT WASHER 24 | 1 | PC. |
| 19 | 1 | | 233478-4 | * COMPRESSION SPRING 25 | 1 | PC. |
| | 2 | | 234082-2 | * COMPRESSION SPRING 25 | 1 | PC. |
| | 3 | | 234337-5 | * COMPRESSION SPRING 25 | 1 | PC. |
| 20 | | | 267766-7 | CUP WASHER 14 | 1 | PC. |
| 21 | | | 216011-7 | STEEL BALL 5.6 | 2 | PC. |
| 22 | 1 | | 227027-7 | * SPUR GEAR 22 - N/L/A | 2 | PC. |
| | 2 | | 227233-4 | * SPUR GEAR 22 | 2 | PC. |
| 23 | | | 324220-5 | SPINDLE | 1 | PC. |
| 24 | | | 256253-1 | PIN 5 | 2 | PC. |
| 25 | | | 267212-0 | FLAT WASHER 12 | 1 | PC. |
| 26 | | | 227150-8 | INTERNAL GEAR 51 | 1 | PC. |
| 27 | | | 213507-9 | O RING 40 | 1 | PC. |
| 28 | | | 158145-9 | BEARING BOX COMPLETE | 1 | PC. |
| 29 | | | 638495-3 | YORK UNIT | 1 | PC. |
| 30 | 1 | | 619192-0 | ARMATURE - N/L/A | 1 | PC. |
| | 2 | | 619251-0 | ARMATURE | 1 | PC. |
| 31 | 1 | | 194427-5 | * CARBON BRUSH CB-440, 2PCS/SET, W/O ORIGIN - N/L/A | 1 | SET |
| | 2 | | 195021-6 | * CARBON BRUSH CB-440, 2PC/SET (W/ ORIGIN) (TYPE 2-3) | 1 | SET |
| 32 | 1 | | 638498-7 | * BRUSH HOLDER COMPLETE | 1 | PC. |
| | 2 | | 632G46-6 | * BRUSH HOLDER COMPLETE | 1 | PC. |
| | | INC. | 689181-9 | * SPACER (Added -N/A Individually) | 2 | PC. |
| | | INC. | | * Item No. 31 | | |
| 33 | | | 263032-0 | RUBBER PIN 4 | 2 | PC. |
| 34 | | | 418981-8 | REAR COVER | 1 | PC. |
| 35 | | | 266130-9 | TAPPING SCREW BIND PT 3X16 | 2 | PC. |
| 36 | | | 631631-0 | LIGHT CIRCUIT | 1 | PC. |
| 37 | | | 810292-1 | CAUTION LABEL | 1 | PC. |
| 40 | | | 251314-2 | + SCREW M4X12 | 1 | PC. |
| 41 | | | 424026-2 | CUSHION | 1 | PC. |
| 42 | | | 263036-2 | RUBBER PIN 5 | 1 | PC. |
| 43 | | | 268184-2 | PIN 1.5 | 1 | PC. |
| ACCESSORIES | | | - See catalogue or visit www.makita.ca for optional accessories - | | | |
| A01 | 1 | | DC18RA | CHARGER DC18RA | 1 | PC. |
| | 2 | | DC18RC | CHARGER DC18RC | 1 | PC. |
| A02 | | | 194066-1 | 14.4V LI-ION BATTERY BL1430 | 1 | PC. |

| Item No. | Type | Sub | Parts No. | Description | Qty | Unit |
|----------|------|------|-----------|---------------------------------------|-----|------|
| A03 | 1 | | 824753-5 | PLASTIC CARRYING CASE | 1 | PC. |
| | | INC. | 324207-7 | SHAFT | 1 | PC. |
| | | INC. | 413098-2 | PLATE | 4 | PC. |
| | | INC. | 417724-5 | LATCH | 2 | PC. |
| | | INC. | 419216-0 | HANDLE | 1 | PC. |
| | | INC. | 419215-2A | PLASTIC CASE LID, TAB TYPE | 1 | PC. |
| | 2 | | 141205-4 | PLASTIC CASE COMPLETE F/ DC18RC | 1 | PC. |
| | | INC. | 324207-7 | SHAFT | 1 | PC. |
| | | INC. | 413098-2 | PLATE | 4 | PC. |
| | | INC. | 417724-5 | LATCH | 2 | PC. |
| | | INC. | 419216-0 | HANDLE | 1 | PC. |
| | | INC. | 419215-2A | PLASTIC CASE LID, TAB TYPE | 1 | PC. |
| A04 | 1 | | 324705-1 | HOOK (F/ BL1430, BL1830) | 1 | PC. |
| | 2 | | 346449-3 | * HOOK (F/ BL1430, BL1830) | 1 | PC. |
| A05 | | | 450128-8 | BATTERY COVER | 1 | PC. |
| A06 | | | 194649-7 | BATTERY PROTECTOR (F/ BL1430, BL1830) | 1 | PC. |
| A07 | | | 134874-8 | EXTENSION BAR 1/2" DRIVE | 1 | PC. |
| A08 | | | 134873-0 | B/T ADAPTOR 1/2" DRIVE BIT | 1 | PC. |
| A09 | | | 134877-2 | UNIVERSAL JOINT 1/2" - LARGE | 1 | PC. |

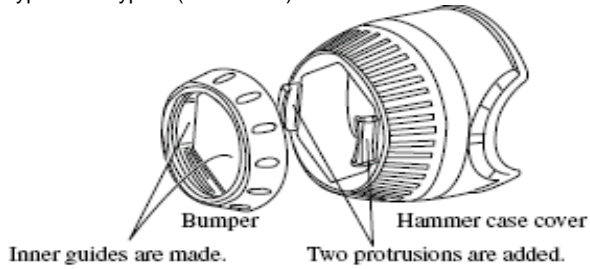
SERVICE CHANGES

1. Changes on Hammer Case, Bumper

| Item No. | Description | Type 1 | Type 2 | Type 3 | Type 4 |
|----------|-------------------|------------------|------------------|-----------------|----------|
| 8 | Bumper | 421964-9 (N/L/A) | 424155-1 (Green) | 424155-1 (Blue) | 424375-7 |
| 9 | Hammer Case Cover | 419514-2 | 450808-6 | 451361-5 | 452439-7 |
| 10 | Hammer Case Com. | 158144-1 (N/L/A) | | 140171-2 | |

Above parts are completely interchangeable as a set.
 Type 2 and Type 3 Bumper are interchangeable as themselves.

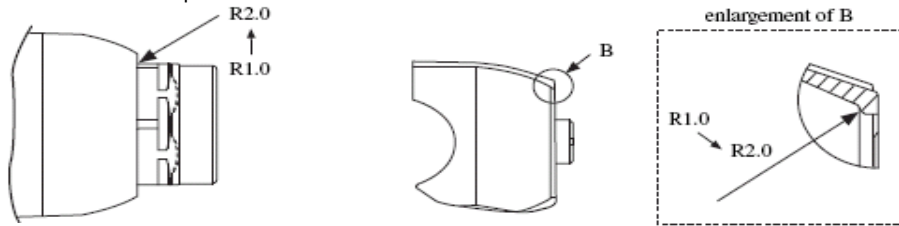
Type 1 >> Type 2 (T/l# 81628)



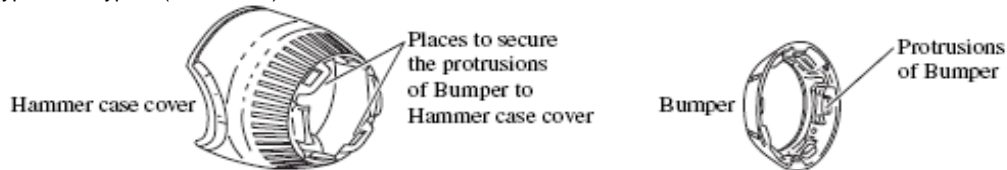
Type 2 >> Type 3 (T/l# 84119, 83269)

Hammer case complete

Hammer case cover



Type 3 >> Type 4 (T/l# 89111)



SERVICE CHANGES

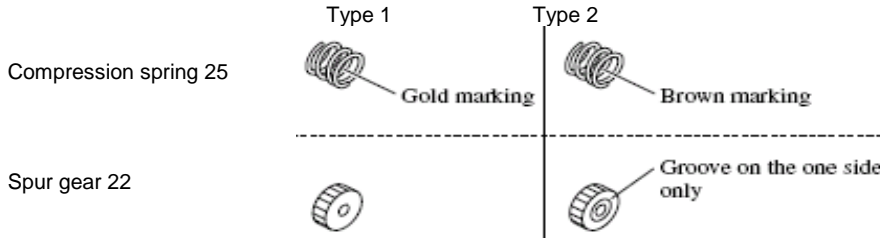
2. Changes on Spur gear and compression spring

| Item No. | Description | Type 1 | Type 2 | Type 3 |
|----------|-----------------------|----------|----------|----------|
| 19 | Compression spring 25 | 233478-4 | 234082-2 | 234337-5 |
| 22 | Spur gear 22 | 227027-7 | 227233-4 | |

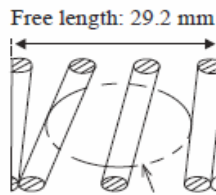
Above parts are completely interchangeable as a set.

(T/I #81503)

(T/I #A2541)

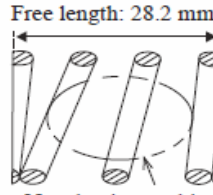


Compression spring 25
Type2



Brown paint marking(234082-2)

Type3



Navel paint marking(234337-5)

3. Changes on How to Assembly Carbon Brushes

Change on Brush Holder Complete

(T/I# 89544)

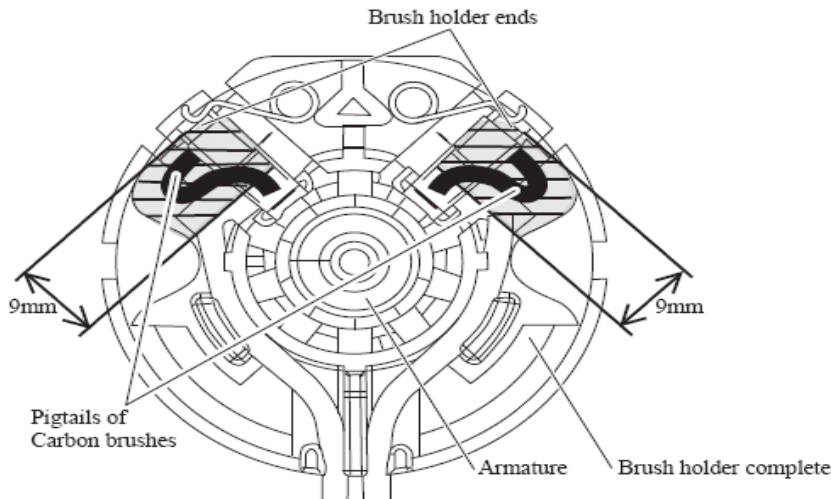
(TI# B1033)

| Item No. | Description | Type 1 | Type 2 | Type 3 |
|----------|-----------------------|--------------------------|-------------------------|---|
| 31 | Carbon Brushes | 194427-5 (W/O ORIGIN) | 195021-6 (W/ ORIGIN) | 195021-6 (W/ ORIGIN) Included in No. 32 |
| 32 | Brush Holder Complete | 638498-7 | | 632G49-0 |
| | Inc. Spacer | ----- | | 689181-9 (N/A individually) |

Do not protrude the pigtails of Carbon brushes from the specific spaces.

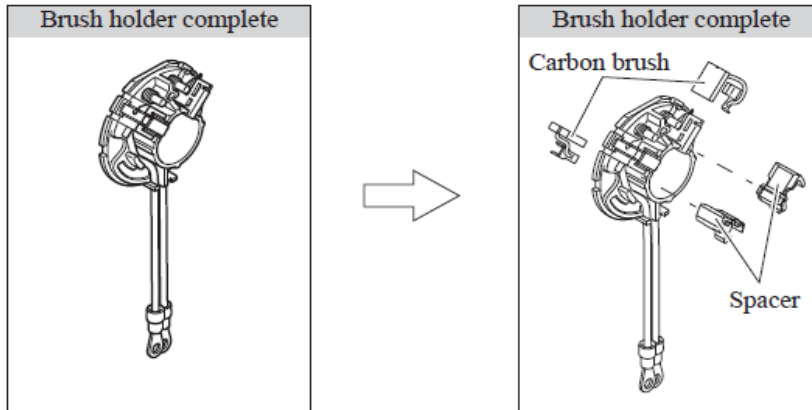
Refer to the following illustration.

(T/I# 89544)



SERVICE CHANGES

Type2 > Type 3



4. Changes on Switch, Terminal and Housing Set (Battery Protection Circuit)

(T/I# 80432) (T/I# 91081)

| Item No. | Description | Type 1 | Type 2 | Type 3 |
|----------|-------------|----------|----------|----------|
| 1 | Housing Set | 188192-6 | 188242-7 | 187466-2 |
| 4 | Terminal | | 643811-6 | 643866-1 |
| 6 | Switch | | 650564-0 | 650652-3 |

Above parts are completely interchangeable as a set.

Service Note:

- Use TYPE 3 parts for repair of the models manufactured on or after July 2011 with using Yellow lead wire between Switch and Terminal.
- Use TYPE 2 (or TYPE 1) parts for repair of the models manufactured before July 2011 without using Yellow lead wire between Switch and Terminal.

**** See Technical Information #91081 for Wiring Diagram Change**

5. Changes on Hook

| Item No. | Description | Type 1 | Type 2 |
|----------|-------------|----------|----------|
| A04 | Hook | 324705-1 | 346449-3 |

